

Spatial Distribution of Notice Boards Around Tsukuba Central Area and University of Tsukuba Campus

Khun Kyaw Aung Hein

1. Purpose

The purpose of the field work is to examine the spatial distribution of notice boards and density by using GPS and GIS application.

2. Study Area

The case study is Tsukuba Central Area and University of Tsukuba

3. Methodology

A field work was conducted by using GPS (Garmin) to determine the geographical locations of notice boards based on the transportation and public facilities. The point and the GPS tracking information collected by using GPS were converted into GIS and integration with Zenrin 2008 and land use 2000.

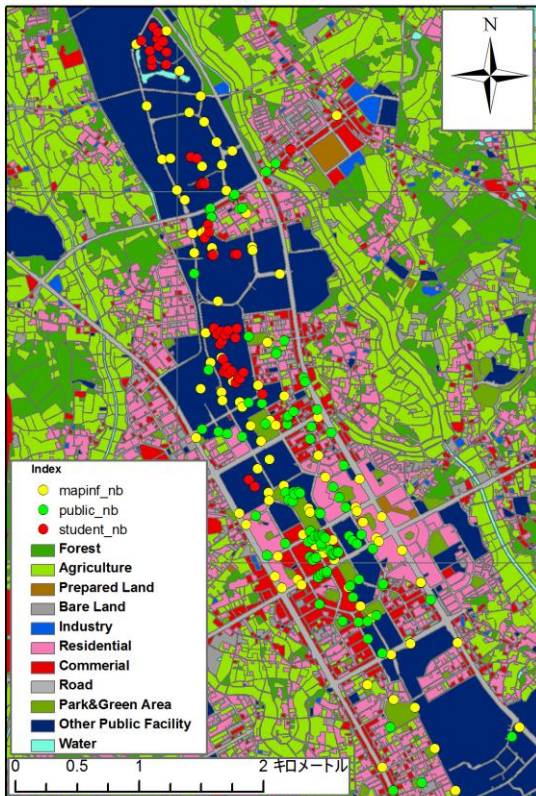


Figure1.Spatial distribution of notice boards applied to land use

4. Result & Discussion

A total of 262 points representing the spatial distribution of notice boards in the study area were collected. The result of the spatial distribution of notice board is shown in Figure 1. Generally, most of the map info notice boards and public notice boards are distributed and concentrated across the commercial districts and along the transportation and public facilities. Some notice boards are not only use for public information but also advertising purposes. Student notice boards are piled up within the University campus areas, particularly in student dormitories. In order to avoid from the damages, most of the student notice boards in the University are placed inside the building rather than the outside. Based on the land use and public facilities the spatial distribution of notice boards are not only unequally distributed. The shape and patterns are also different.

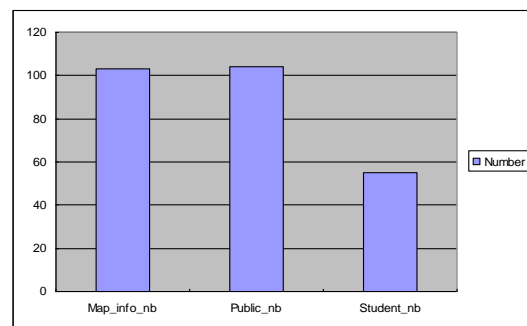


Figure 2. Show the distribution numbers of notice boards



Photos show the different shapes and patterns of notice boards